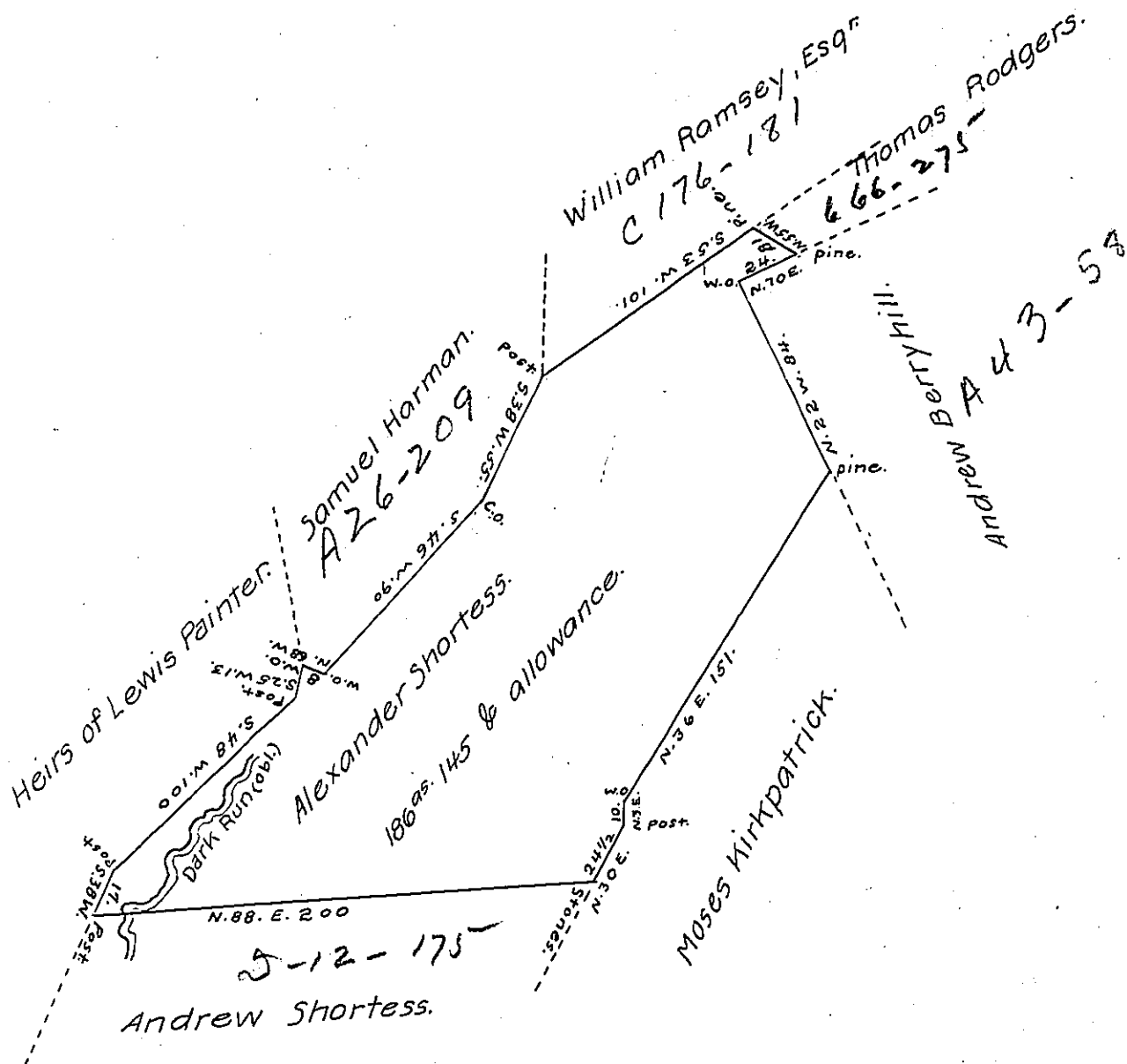


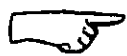
FORM NO 1.



The Draft of a tract of land Situate in Rye Township, Cumber-  
land County containing one hundred eighty six Acres 145 perches &  
allowance Surveyd 30<sup>th</sup> July 1814 in pursuance of a Warrent granted  
Alexander Shortess dated the 20<sup>th</sup> Novr. 1812.

Robt. Clark, D.S.

To Richd T. Leech, Esq,  
Surveyor Genl of Pennsya<sup>a</sup>



I Certify that a family is actually  
Residing on this land

R.O., D.S.

IN TESTIMONY that the above is a copy of the original remaining on file in  
the Department of Internal Affairs of Pennsylvania, made  
conformably to an Act of Assembly approved the 16th day of  
February, 1833, I have hereunto set my Hand and caused  
the Seal of said Department to be affixed at Harrisburg,  
this twenty third day of May, 1907

*Henry Howell*  
Secretary of Internal Affairs.